

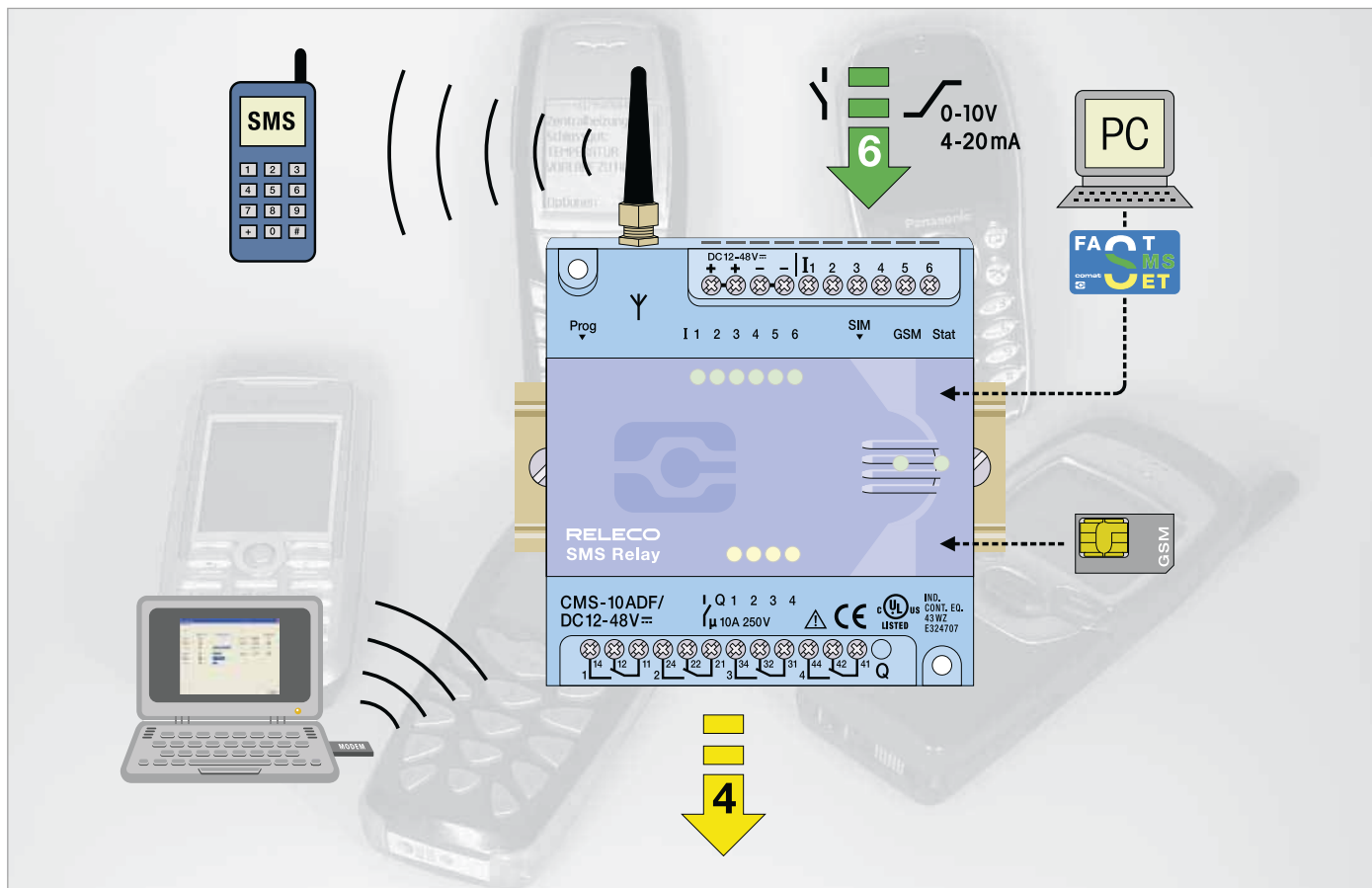
NEW

With additional functions

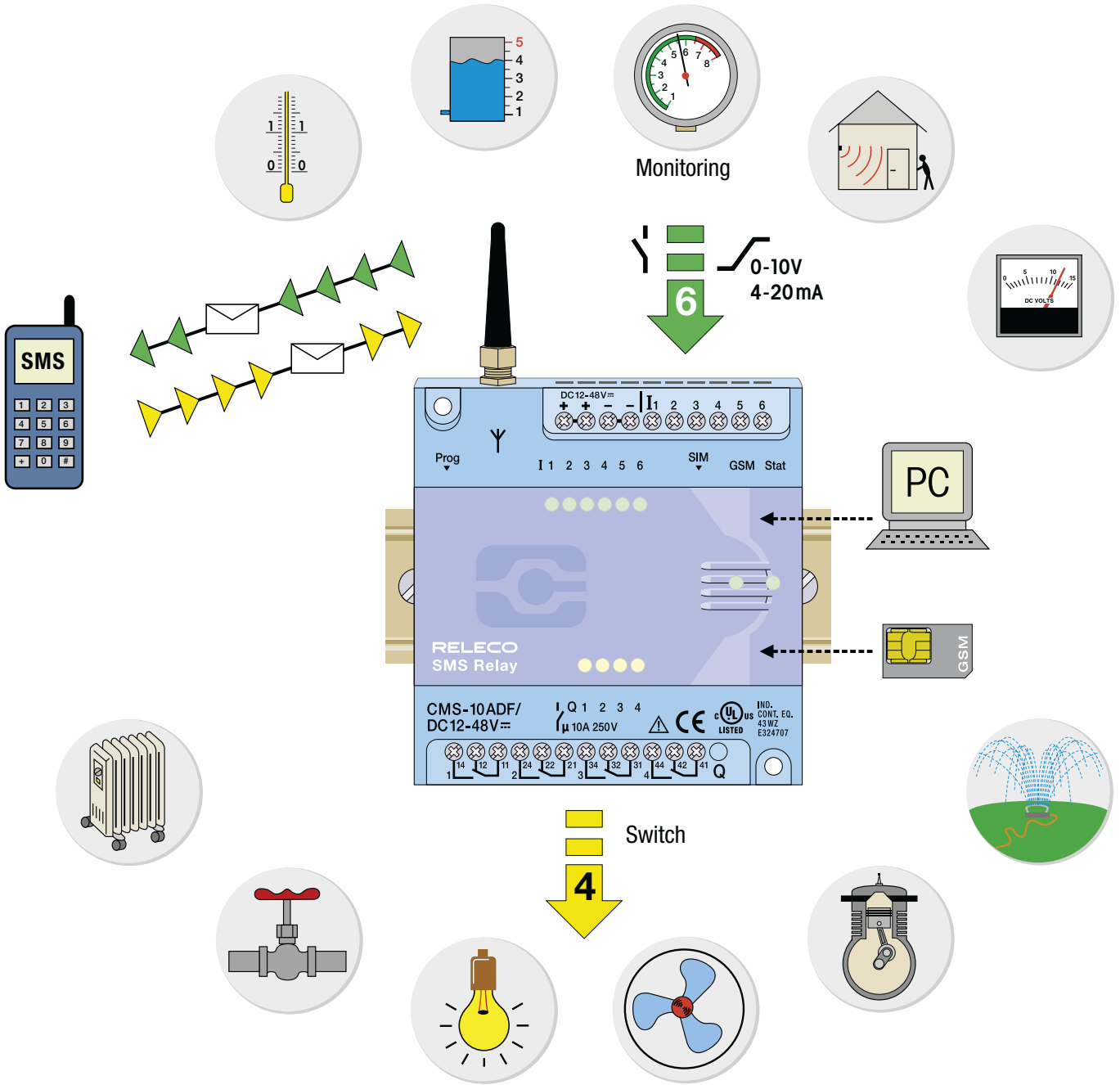
1.3 Automation Relays

1.3.1 Remote Control Relay

SMS Relay



- ✓ Easy configuration with PC and «FAST SMS SET™»-up configuration software
- ✓ Sequential alert messaging to 5 different subscribers
- ✓ Analog and/or digital inputs
- ✓ Monitoring of all inputs and outputs with SMS messaging
- ✓ Request of analogue values by SMS
- ✓ Remote control of outputs by SMS
- ✓ Power failure notification by SMS messaging
- ✓ Status change messages by SMS
- ✓ User defined message text
- NEW** ✓ Remote access and status display by PC/Notebook
- NEW** ✓ Call-In Function
- NEW** ✓ Alarm messages by e-mail
- NEW** ✓ App for Android operated smartphones



Monitoring
Alerting
Controlling

Alerting,
Controlling
Monitoring

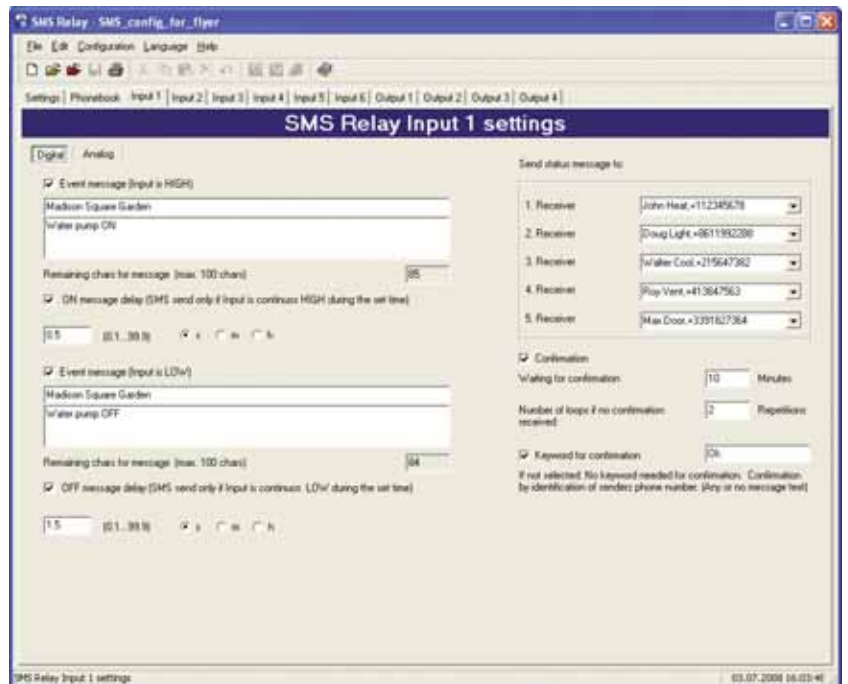
Controlling
Monitoring
Alerting



Digital Inputs

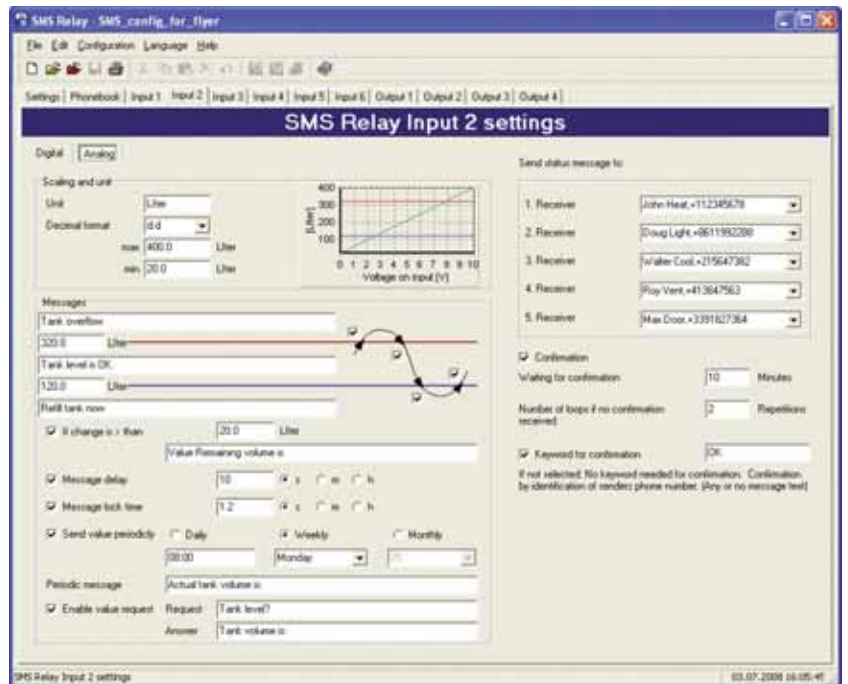
Language

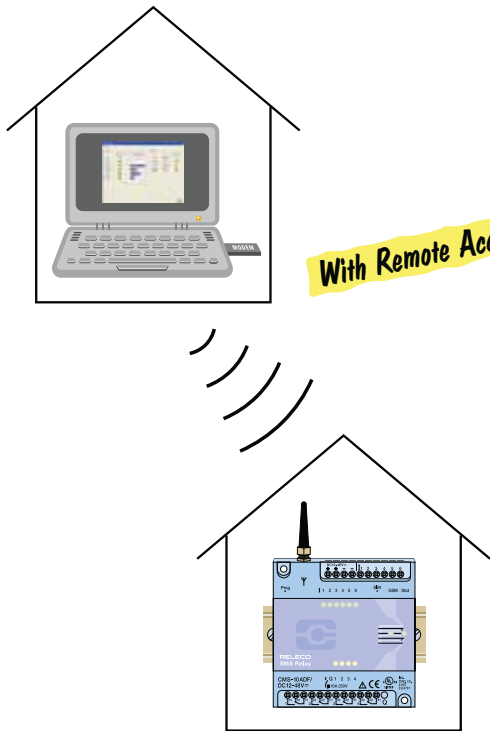
- Chinesisch vereinfacht
- Chinesisch traditionell
- Tschechisch
- Dänisch
- Deutsch
- Holländisch
- Englisch
- Spanisch
- Flämisch
- Französisch
- Italienisch
- Polnisch
- Russisch
- Schwedisch



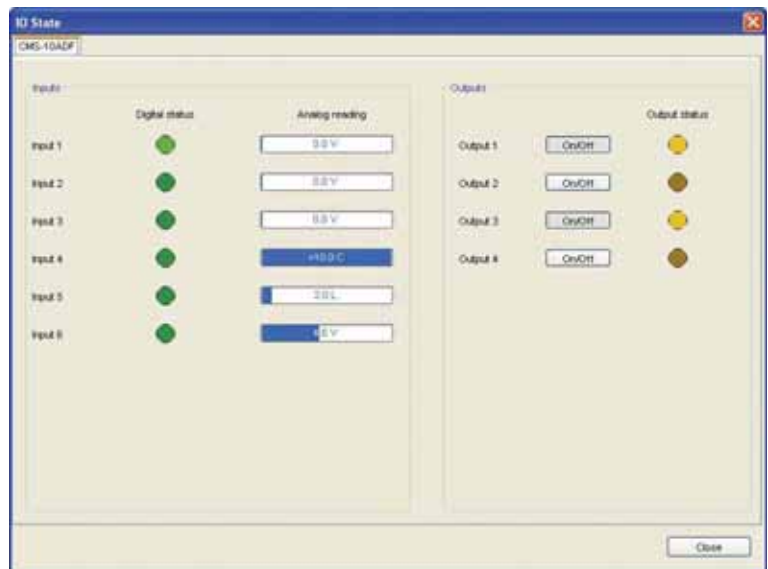
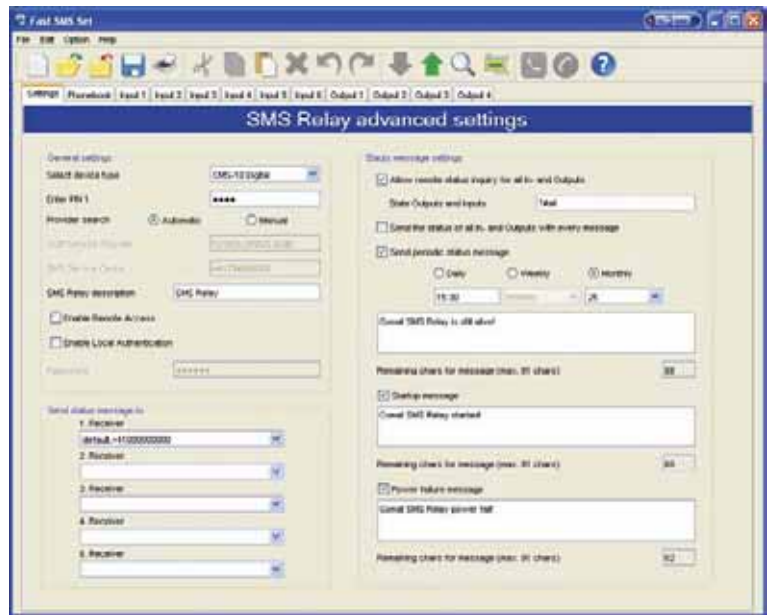
Analog Inputs

- Free selectable units e.g.:
l, kg, m³, psi, F, sqm, lbs
- Any min/max value can be defined.
Scale adjustment automatic
- Value inquire by SMS
- Automatic alerting if min/max values are exceeded
- Status display on PC/Notebook via GSM network





Basic settings



Status display on the PC screen

Remote maintenance

The option "remote access" allows users to change the device configuration without presence on site.

The connection with a serial cable is replaced with the communication over the GSM network.

For that purpose, the user has to establish communication with the SMS Relay via a GSM modem. (for example with CMS-GMS-MOD) connected to the PC.

As soon as the connection between the PC and the device is established, a new configuration can be downloaded or the existing configuration may be read out. This allows to simply save or change a phone number of a message receiver or to modify an analogue value or a time setting.


With the new configuration software it is also possible to display all Input and Output status as well as to switch Outputs without sending an SMS message to the device.

It has to be noted that establishing of communication and data transfers in the GSM network are subject of charges. These costs are variable depending on the provider and subscription. We recommend to keep the connection as short as possible.

The easy and comfortable handling of the SMS Relay is not affected with the new functions. The configuration software "FAST SMS SET" has not changed significantly and remains easy to use.

NEW

Technical Data's

Typ	CMS-10F/AC 110-240V	CMS-10F/DC12-48V	CMS-10ADF/DC12-48V	CMS-10ACDF/DC12-48V
Operating voltage	AC 110-240V~ 50/60Hz	DC 12-48V= max. 10%	DC 12-48V= max. 10%	DC 12-48V= max. 10%
Power consumption	8VA/6W	4,2W	4,2W	4,2W
Switching capacity 	4 x 10A 250V; Sum of current max. 20A			
Temperature range	Tu: -25...+55° C; Rel. humidity: 10...95% (non condensing); Protection IP20			
Inputs	6 x digital (trigger level 85V~)	6 x digital (trigger level 9,5V=)	6 x digital and/or analog (trigger level 9,5V=) (analog 0-10V=)	2 x analog (4-20 mA) 4 x digital and/or analog (trigger level 9,5V=) (analog 0-10V=)
Outputs	4 x CO contacts μ 10A/250V AC-1			
Provider (Phone/Network)	User selectable (dependent on SIM card)			
Frequency	GSM QuadBand (850; 900; 1800; 1900MHz)			

Installation note

The base unit device is delivered fully operational and includes the small aerial CMS-ANT.

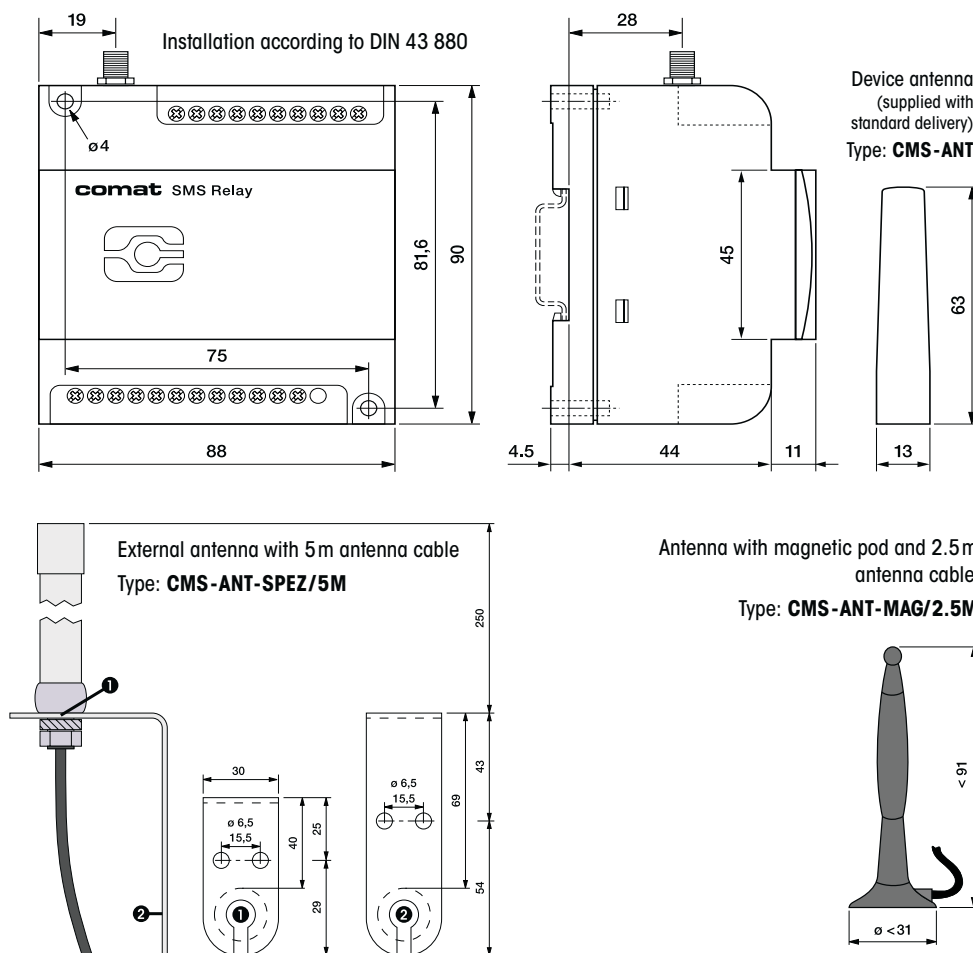
Before installation, the final location of installation must be taken into consideration.

For installation inside a control panel, the small device aerial may not be suitable and needs to be replaced by the antenna with magnetic pod (CMS-ANT-MAG/2.5M) or by the external antenna (CMS-ANT-SPEZ/5M).

These two antennas provide considerably better results and improve communication with the mobile network.

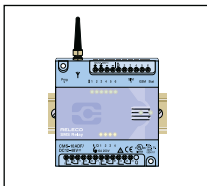
Please ask our product specialists if you require any support.

Dimensions



Typ	Description
CMS-10F/AC 110-240 V	SMS Relay AC 110-240V with 6 digital inputs incl. small antenna (CMS-ANT)
CMS-10F/DC 12-48 V	SMS Relay DC 12-48V with 6 digital inputs incl. small antenna (CMS-ANT)
CMS-10ADF/DC 12-48 V	SMS Relay DC 12-48V with 6 digital and analog inputs incl. small antenna (CMS-ANT)
CMS-10ACDF/DC 12-48 V	SMS Relay DC 12-48V with 2 analog current inputs and 4 analog and/or digital voltage inputs, incl. small antenna (CMS-ANT)
KIT consisting of: A base unit with small antenna, antenna with magnetic pod and 2.5 m cable, programming cable, USB-RS232 Interface connector, CD with «FAST SMS SET™»-up programming software and operation manual	
CMS-10FKIT/AC 110-240 V	Installation kit complete with 6 digital inputs (SMS Relay AC 110-240V)
CMS-10FKIT/DC 12-48 V	Installation kit complete with 6 digital inputs (SMS Relay DC 12-48 V)
CMS-10ADFKIT/DC 12-48 V	Installation kit complete with 6 digital and/or analog inputs (SMS Relay DC 12-48 V)
CMS-10ACDFKIT/DC 12-48 V	SMS Relay Kit DC 12-48V with 2 analog current inputs and 4 analog and/or digital voltage inputs
Accessories	
CMS-RS 232	SMS Relay programming cable RS 232
CMS-USB	USB-RS232 interface connector (including driver CD)
CMS-ANT	Small spare antenna for base unit, 63mm long
CMS-ANT-MAG/2.5 M	Antenna with magnetic pod and 2.5 m antenna cable
CMS-ANT-SPEZ/5 M	External antenna with 5 m antenna cable
CMS-ANT-KAB/5M	Antenna cable 5 m (extension)
CMS-ANT-KAB/10M	Antenna cable 10 m (extension)
CMS-ANT-ADAPT	Adaptor FME to SMA plug
CMS-CAP	Device cover (spare)
CMS-CD	CD with FAST SMS SET -up programming software and manual
DR-15-24	Power supply 15W, 24V. DIN-rail mounting
DR-30-24	Power supply 36W, 24V. DIN-rail mounting
4114 PReasy	Universal transmitter PReasy 4114
4501	Display front (to PReasy 4114)
ZPT-10-H	PT100/PT1000 Amplifier
RF01-U	Room temperature sensor 0...50°C without display
RF01-U-D	Room temperature sensor 0...50°C with display
RTBSB-001-010	Room thermostat 5...30°C with operating controls
WF50 ext-U	Outdoor temperature sensor -50...+50°C
KS-110	AC sensor for monitoring of humidity and temperature in control panels, archives and cabinets
PS1	Water gauge suitable for application of level measurements in water installations
CMS-GSM-MOD	GSM Module (Connected to USB port of the PC) for remote access to the SMS Relay

Type



CMS-10F/...
CMS-10ADF/...
CMS-10ACDF/...

SMS Relay

- SMS Relay incl. small antenna 63 mm
- WITHOUT programming cable, magnetic pod antenna, USB converter and programming software
- Suitable for user which already possess the accessories



CMS-10FKIT/...
CMS-10ADFKIT/...
CMS-10ACDFKIT/...

SMS Relay KIT

- SMS Relay incl. small antenna 63 mm
- Including programming cable, magnetic pod antenna with 2.5 m cable, USB converter USB-RS232, and programming software "FAST SMS SET™" with manual
- Suitable for user first user

Type



DR-15-24

Power supply

- Input
 - Voltage range: 85-264 V AC, 120-370V DC
 - Frequency range: 47-63 Hz
 - Max. current: 0,88 A
- Output
 - DC Nominal voltage: 24 V
 - Setting range: 21,6-26,4 V
 - Power range: 0-0,63 A
 - Nominal load: 15,2 W



DR-30-24

Power supply

- Input
 - Voltage range: 85-264 V AC, 120-370V DC
 - Frequency range: 47-63 Hz
 - Max. current: 0,88 A
- Output
 - DC Nominal voltage: 24 V
 - Setting range: 21,6-26,4 V
 - Power range: 0-1,5 A
 - Nominal load: 36 W



4114 PReasy

Universal transmitter

- Input
 - Current: 0/4...20 mA
 - Voltage: 0/0,2...1; 0/1...5; 0/2...10V DC
 - PT100: 2-, 3- and 4 wire
 - TE types: B...W5
 - Potentiometer: 10Ω...100kΩ
 - Lin. Resistance: 0Ω...10kΩ
- Output
 - Current: 0/4...20 mA / 800Ω
 - Voltage: 0/0,2...1; 0/1...5; 0/2...10V DC



4501

Display/Programming panel for PReasy

- Communication interface for setting of operative parameters
- Can be plugged from one device to the other for data transmission
- Stationary display to visualize status of process data
- Password protected
- LCD display with 4 lines



ZPT-10-H

PT100/PT1000 Amplifier

- Input: PT100; PT1000: 2-, 3-line switching
- Output: 0...10V DC
- Supply voltage: 15...35V DC
- DIN rail mounting



RF01-U

Room temperature sensor without display

- Integrated transducer
- Output: 0...10V DC
- Measuring range: 0°C...50°C
- Supply voltage: 24 V DC