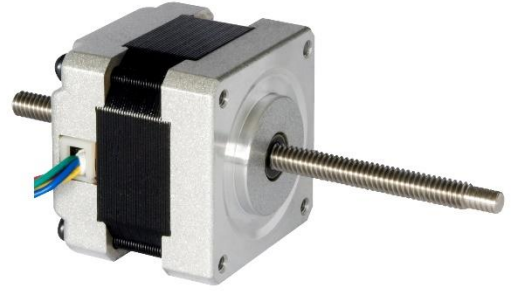


Linear Hybrid Stepping Motor 39BYGL series

General Specifications

Step accuracy	±5%
Temperature Rise	80° C Max
Ambient Temperature Range	-20°C~+50°C
Insulation Resistance	100MΩ Min.500VC DC
Dielectric Strength	500V AC 1 minute



Electrical Specifications

Model	39BYGL215A
Step distance (mm/step)	0.01
Motor Length (mm)	34
Rate Voltage (V)	12
Rate Current (A)	0.4
Phase Resistance (Ω)	30
Phase Inductance (mH)	42
Holding Torque (kg.cm)	0.21
Lead Wire (NO.)	4
Detent Torque (g.cm)	0.12
Rotor Inertia (kg.m)	0.02
Motor Weight (kg)	0.18

