



General Specifications

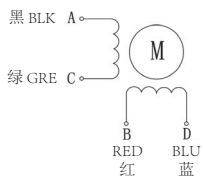
Step Accuracy	± 5%
Temperature Rise	80 °C Max
Insulation Resistance	100MΩ Min.500VC DC
Ambient Temperature Range	-20°C~+50°C
Dielectric Strength	500VAC 1 minute
Max Radial Force	75N (20mm from front flange)
Max Axial Force	15N

Technical Specifications

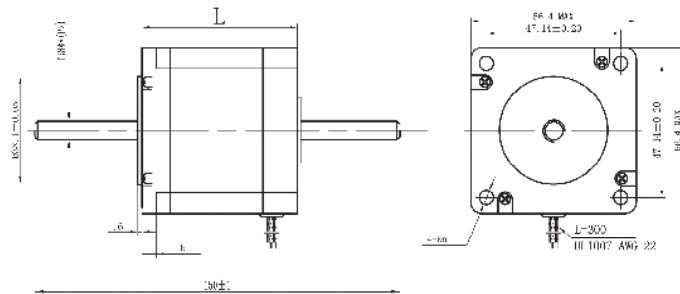
Model	Step Angle (°/Step)	Lead Wire (NO.)	Voltage (V)	Current (A/Phase)	Resistance (Ω/Phase)	Inductance (mH/Phase)	Holding Torque (Kg.cm)	Motor Height L (mm)	Motor Weight (Kg)
57BYGHL013-15	1.8	4	2.7	1.5	1.8	4.0	4.0	41	0.45
57BYGHL216-10			3.3	1.7	1.95	6.0	10.0	51	0.65
57BYGHL401-03			6.0	0.6	10.0	32.0	9.0	56	0.70
57BYGHL602-07			10.4	0.8	13.0	42.0	19.8	78	1.00
57BYGHL815-001			7.36	1.6	4.6	16.0	20.0	84	1.13

* Products can be customized by special request.

Wiring Diagram



Through Type



External Driver Type

