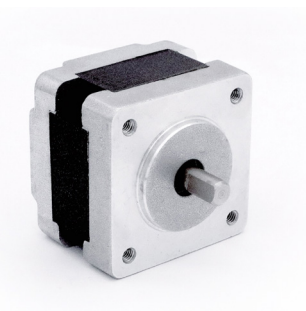


35BYGX

HYBRID STEPPING MOTOR



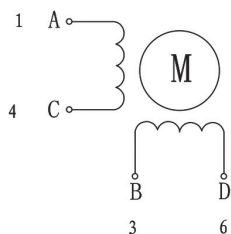
General Specifications

Step Accuracy	± 5%
Temperature Rise	80 °C Max
Insulation Resistance	100MΩ Min.500VC DC
Ambient Temperature Range	-20°C~+50°C
Dielectric Strength	500VAC 1 minute
Max Radial Force	28N (20mm from front flange)
Max Axial Force	10N

Technical Specifications

Model	Step Angle (°/Step)	Lead Wire (NO.)	Voltage (V)	Current (A/Phase)	Resistance (Ω/Phase)	Inductance (mH/Phase)	Holding Torque (g.cm)	Motor Height L (mm)	Motor Weight (Kg)
35BYGX001A	1.8	4	10.4	0.4	26	17	500	23	0.12
35BYGX200A			4.20	1	4.2	5.5	1250	29	0.12
35BYGX201A			1.45	0.5	2.9	2.6	500	29	0.13
35BYGX401A			3.20	1	3.2	3.8	1400	34	0.16

Wiring Diagram



Mechanical Dimension

