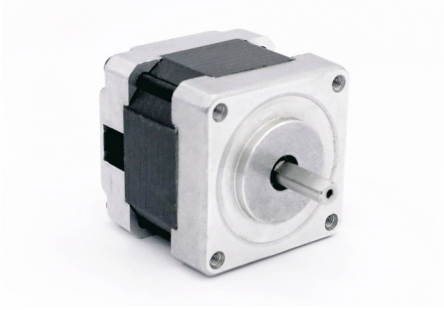


# 39BYGX

## HYBRID STEPPING MOTOR



### General Specifications

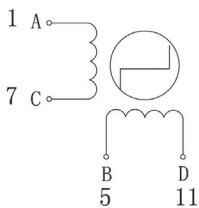
Step Accuracy	± 5%
Temperature Rise	80 °C Max
Insulation Resistance	100MΩ Min.500VC DC
Ambient Temperature Range	-20°C~+50°C
Dielectric Strength	500VAC 1 minute
Max Radial Force	28N (20mm from front flange)
Max Axial Force	10N

### Technical Specifications

Model	Step Angle (°/Step)	Lead Wire (NO.)	Voltage (V)	Current (A/Phase)	Resistance (Ω/Phase)	Inductance (mH/Phase)	Holding Torque (g.cm)	Motor Height L (mm)	Motor Weight (Kg)
39BYGX001A	1.8	4	13.44	0.48	28	21	1000	20	0.10
39BYGX002A			8.4	0.7	12	11	1200	20	0.10
39BYGX100A			12	0.4	30	20	1300	22	0.12
39BYGX200A			14.4	0.4	36	33	1700	25	0.14

\* Products can be customized by special request.

### Wiring Diagram



### Mechanical Dimension

