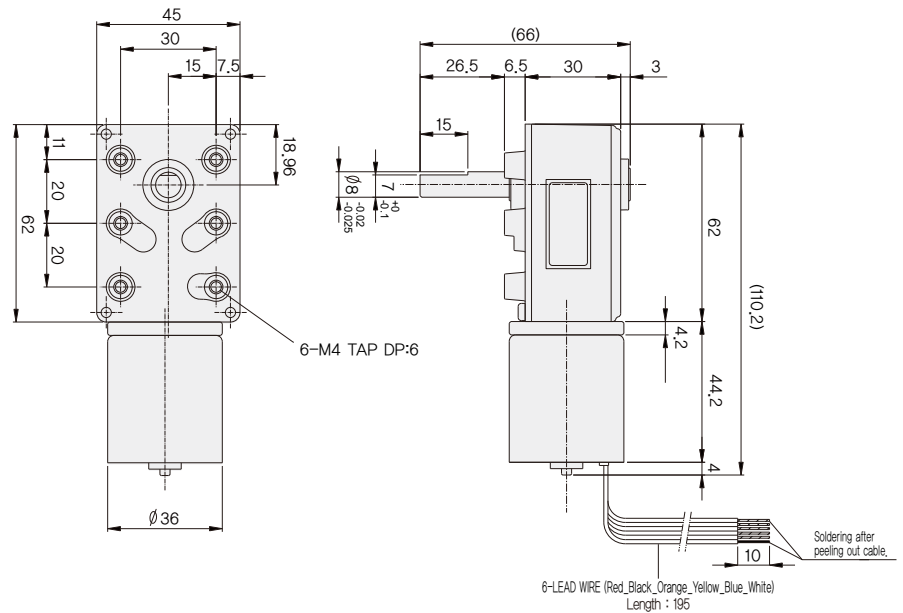


### DIMENSIONS

#### KWB-3640 BLDC SERIES



#### BLDC MOTOR PERFORMANCE DATA

MODEL	ITEM	VOLTAGE (DC)	NO LOAD		AT MAX. EFF.		WEIGHT (g)	
			mA	rpm	gf-cm	A		rpm
KB3640S1		12V	500	5300	150	1.2	4500	150
KB3640S2		24V	300	5000	250	0.8	3900	

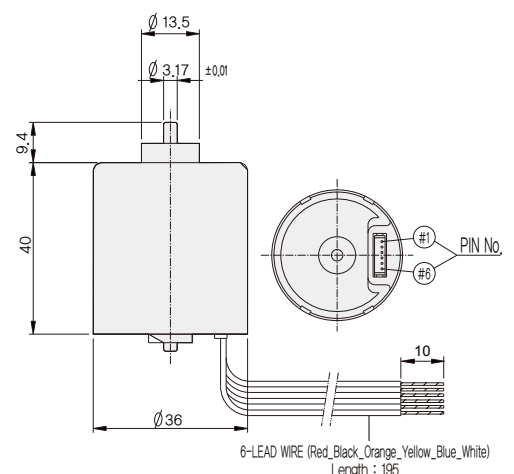
#### AT MAXIMUM EFFICIENCY

GEAR	MODEL	KB3640S1		KB3640S2	
		DC 12V		DC 24V	
		rpm	kgf-cm	rpm	kgf-cm
1/70		64	4	55.7	6.8
1/100		45	5.8	39	9.7
1/130		34.6	7.5	30	12.6
1/160		28	9.3	24.3	15.5
1/200		22.5	11.6	19.5	19.4
1/260		17.5	15	15	20
1/330		13.6	17.3	11.8	20
1/400		11.2	20	9.7	20
1/450		10	20	8.6	20
1/500		9	20	7.8	20
1/600		7.5	20	6.5	20
1/750		6	20	5.2	20
1/925		4.8	20	4.2	20
1/1000		4.5	20	3.9	20

#### How to connect when speed control is not needed.

No - Color	Pin - Contents	Connection Method
1 - White	Brake	No Use, (-) connectin Brake
2 - Blue	PWM	connecting to (-) power
3 - Yellow	1FG (6P/R)	No Use
4 - Orange	CW/CCW	Normal Open, CCW connecting to (-) power
5 - Black	GND	connecting to (-) power
6 - Red	24V	connecting to (+) power

\* Please be cautious that Motor can be damaged when connected to incorrect power (+) (-).



\*      color gear ratios are same rotation direction with motor.  
 \* The standard is F-TYPE.  
 \* R type available.