

HSG Worm Geared Type DC Motors 1-6

HM37

Gear Ratio 1/55, 1/77

Product Features

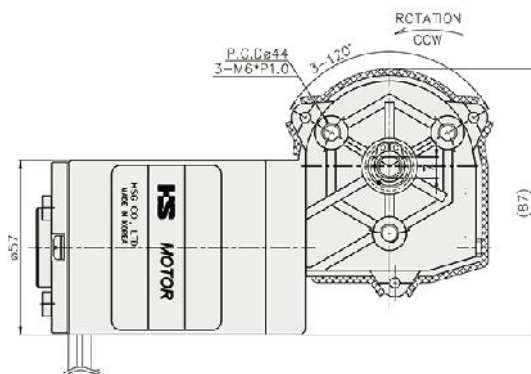
Competitive price

Small size & light weight

Wide range of applications

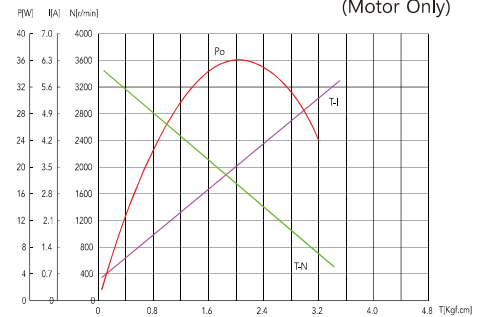


DIMENSIONS

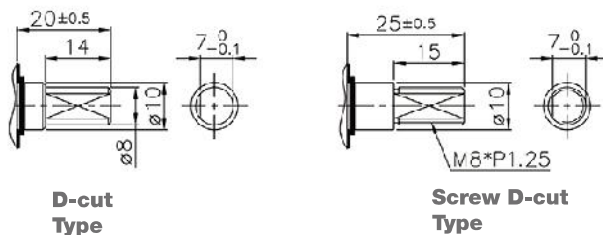


CHARACTERISTIC CURVE

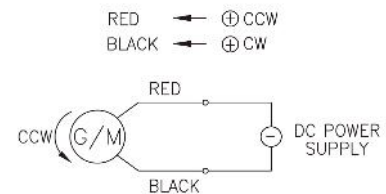
Model No. : HM37-2464A
(Motor Only)



MOTOR OUTPUT SHAFT



CIRCUIT DIAGRAM



SPECIFICATION

Model	Voltage (V)	Geared Motor		Motor Only						Weight (kg)	
		Gear Ratio	No-Load		No-Load		At Rated Load		Output (W)		
			Speed (rpm)	Current (A)	Speed (rpm)	Current (A)	Speed (rpm)	Torque (kgf.cm)			Current (A)
HM37-1264A	12	1:55	64	1.2	3,520	1.2	3,000	0.5	2.4	15	0.8
HM37-2464A	24	1:55	64	1.2	3,520	1.2	3,000	0.5	1.5	15	0.8
HM37-2423A	24	1:77	23	0.4	1,800	0.4	1,350	0.45	0.8	6	0.8