

SEZIONATORI NZ

NZ FUSE-SWITCHES | SECTIONNEURS NZ



PARTNERS



INDICE | Index | Index

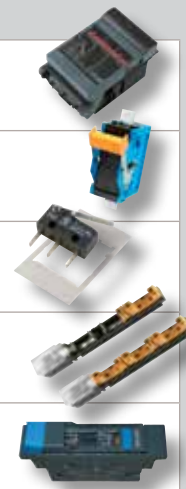
SEZIONATORI ORIZZONTALI

 Horizontal fuse-switches | *Sectionneurs horizontaux*
SEZIONATORI VERTICALI

 Vertical fuse-switches | *Sectionneurs verticaux*
ACCESSORI

 Accessories | *Accessoires*
SEZIONATORI SPECIALI

 Special fuse-switches | *Sectionneurs spéciaux*
SEZIONATORI E FUSIBILI TPS

 TPS fuse-switches and fuses | *Sectionneurs et fusibles TPS*

INFORMAZIONI GENERALI | General Information | *Informations Générales*
■ DESIGN E TECNOLOGIA INCONTESTABILI

Caratteristiche provate dalla nuova costruzione della serie IN dei sezionatori EFEN LV. Tecnologia perfezionata e linea innovativa offrono la migliore combinazione possibile. Le finestrelle mobili facilitano il controllo della tensione sulla lama posteriore dei fusibili NH. I contatti universali offrono all'utente finale una gamma di opzioni più vasta.

Le viti di montaggio incorporate, la cui dimensione varia a seconda del modello, danno la possibilità di fissare il cavo per mezzo delle apposite alette.

È possibile la connessione diretta con le connessioni da cavo piatte oppure mediante cavi dalla sezione a croce diversa utilizzando gli accessori adatti. La forma compatta e la vasta gamma di fori di montaggio, che danno la possibilità di montare l'apparecchio su diversi pannelli o anche su guida a sostegno superiore (misura 00 e 1), rendono semplice e rapida qualsiasi installazione. Montaggi a pressione su bus-bar con guida da 40mm, fino a sistemi con guida da 100mm fanno parte di una vasta gamma di accessori.

■ DESIGN AND TECHNIQUE WITHOUT CONTROVERSY

Proved by the new construction of EFEN LV Fuse Switches series IN. Perfected technology and an appealing model show the best combination of these units. Adjustable windows facilitate voltage testing on the back knife of NH-Fuse link.

Universal terminals provide more options to the end user.

Enclosed connecting screws which are in accordance to size of unit enable the fastening of the cable with cable lugs.

Direct connection is possible with flat cable connection or cable with differential cross sections by using the appropriate accessories. Compact overall dimensions and a full range of different mounting holes for the use of mounting plates as well as a possibility of fastening onto top hat rails in size 00 and 1, offer a fast and simple installation into several cabinet systems. A quick fixing device is obtainable. Push-on bus bar mountings with 40mm rail distance up to systems with 100mm rail distance are part of a wide accessories range.

■ DESIGN ET TECHNOLOGIE INCONTESTABLES

Cette nouvelle gamme de sectionneurs EFEN offre une excellente combinaison entre technologie et fonctionnalité. Les fenêtres mobiles facilitent le contrôle de la tension sur la lame postérieure des fusibles NH.

Les contacts universels offrent à l'utilisateur final une gamme d'options plus large.

Les vis de montage incorporées, dont la dimension varie selon le modèle, donnent la possibilité de fixer le câble au moyen d'ailettes.

La connexion directe est possible avec les câbles plats ou avec les câbles entrecroisés en utilisant les accessoires adaptés.

La forme compacte et la large gamme de trous de montage, qui offrent la possibilité de monter l'appareil sur différents panneaux et aussi sur rail (mesure 00 et 1), rendent simple et rapide n'importe quelle installation. Les montages à pression sur bus-bar avec rail de 40mm, jusqu'aux systèmes avec rail de 100mm font partie d'une large gamme d'accessoires.

SEZIONATORI NZ

NZ fuse-switches | *Sectionneurs NZ*



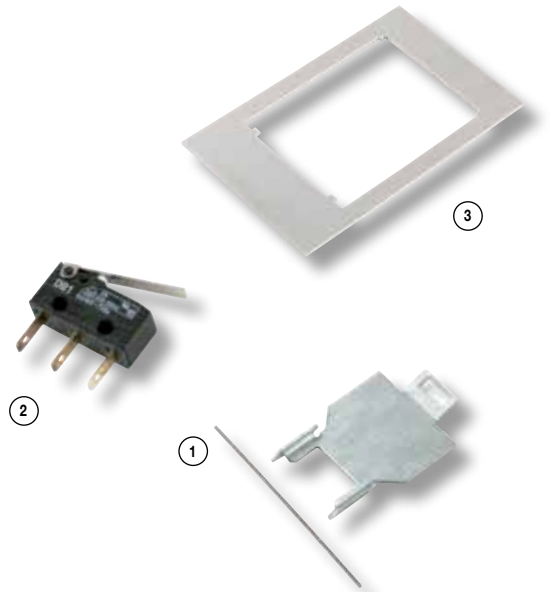
SEZIONATORE ORIZZONTALE NHOOC

NHOOC horizontal fuse-switch | *Sectionneur horizontal NHOOC*

Corrente 100 A	Current 100 A	Courant 100 A
Tensione 690 V	Voltage 690 V	Tension 690 V
Temperatura -25°C +55°C	Temperature range -25°C +55°C	Température -25°C +55°C
Manovre 2000	Cycles 2000	Manoeuvres 2000
Categoria AC 22B	Category AC 22B	Catégorie AC 22B
Norme riferimento VDE 660/IEC 947-3	Standards VDE 660/IEC 947-3	Normes VDE 660/IEC 947-3
Codice omologazione EFEN 34050.0000	Approval code EFEN 34050.0000	Code d'homologation EFEN 34050.0000



Codice Code Code	Contatti Contacts Contacts	Fissaggio Mounting Fixation
NZ000 BH 301	morsetto 50 mm ² /terminal 50 mm ² /bornier 50 mm ²	vite/screw/vis



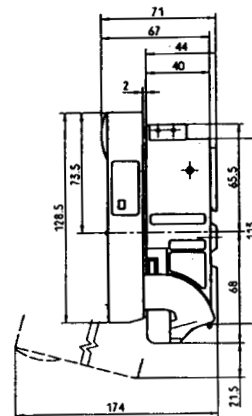
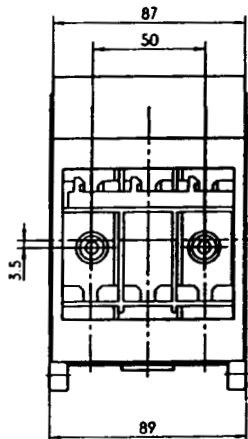
ACCESSORI PER SEZIONATORE NHOOC

Accessories for NHOOC fuse-switch | *Accessoires pour sectionneurs NHOOC*

Codice Code Code	Fig. Fig. Fig.	Descrizione Description Description
NZ000 AH 001 (1)		adattatore guida DIN/quick fixing device for DIN RAIL/adaptateur rail DIN
NZ000 AH 002 (2)		micro-switch di posizione sportello/micro-switch for cover position/micro-switch
NZ000 AH 003 (3)		cornice/frame/cadre



Dimensioni | Dimensions | Dimensions





SEZIONATORE ORIZZONTALE NH00

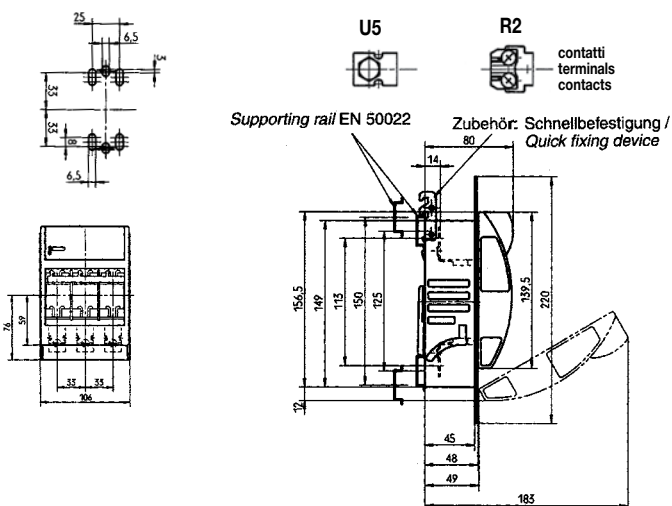
NH00 horizontal fuse-switch | *Sectionneur horizontal NH00*

Corrente 160 A	Current 160 A	Courant 160 A
Tensione 400 V/690 V	Voltage 400 V/690 V	Tension 400 V/690 V
Temperatura -25°C +55°C (3P) -40°C +55°C (1P)	Temperature range -25°C +55°C (3P) -40°C +55°C (1P)	Température -25°C +55°C (3P) -40°C +55°C (1P)
Manovre 1.400	Cycles 1.400	Manoeuvres 1.400
Categoria AC22B AC21B	Category AC22B AC21B	Catégorie AC22B AC21B
Norme riferimento VDE 660/IEC 947-3	Standards VDE 660/IEC 947-3	Normes VDE 660/IEC 947-3
Codice omologazione EFEN SERIE NT - IN	Approval code EFEN SERIE NT - IN	Code d'homologation EFEN SERIE NT - IN



Codice Code Code	Contatti Contacts Contacts	Fissaggio Mounting Fixation
Tripolari Three-pole Tripolaires		
NZ00 BH 301	U5 - U5	vite/screw/vis
NZ00 BH 302	R2 - R2	vite/screw/vis
NZ00 BH 303	U5 - K81	Bus - Bar 40 mm
NZ00 BH 304	R2 - K81	Bus - Bar 40 mm
Unipolari Single-pole Unipolaires		
NZ00 BH 101	U5 - U5	vite/screw/vis
NZ00 BH 103	U5 - K81	Bus - Bar

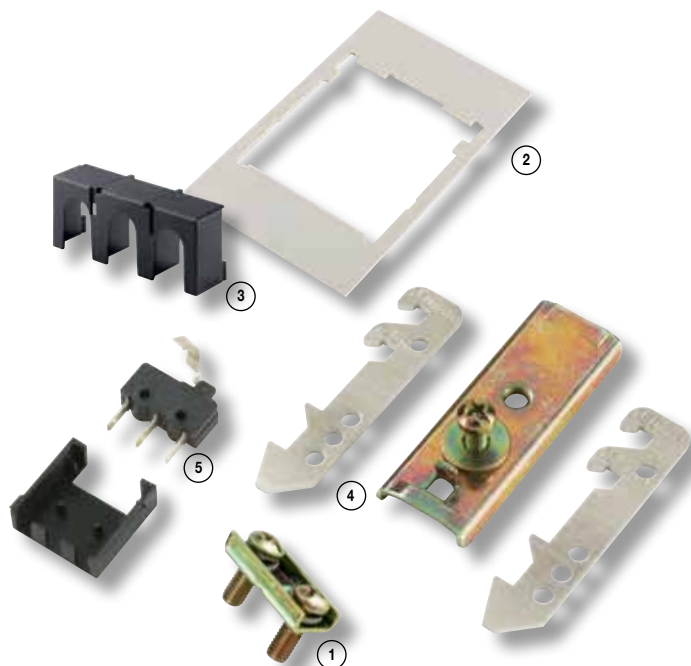
Dimensioni | Dimensions | Dimensions



a richiesta è fornibile fissaggio Bus-Bar 60 mm bus-Bar 60 mm mounting upon request sur demande, nous pouvons les fournir avec fixation Bus-Bar 60 mm

SEZIONATORI NZ

NZ fuse-switches | *Sectionneurs NZ*



ACCESSORI PER SEZIONATORE NH00C

Accessories for NH00C fuse-switches | *Accessoires pour sectionneur NH00C*

Codice Code Code	Fig. Fig. Fig.	Descrizione Description Description
NZ00AH001	(1)	brida piatta/pressure plate/bride plate
NZ00AH004	(2)	cornice/frame/cadre
NZ00AH005	(3)	copricontatti/contact shrouds/capot de protection des contacts
NZ00AH006	(4)	adattatore guida DIN/quick fixing device for DIN RAIL/adaptateur rail DIN
NZ00AH007	(5)	micro-switch di posizione sportello/ micro-switch for cover position/micro-switch
NZ00AH008		adattatore Bus-Bar 60 mm/ Bus-Bar 60 mm quick fixing device/adaptateur Bus-Bar 60 mm



NZ00BH399 NZ00BH399 | NZ00BH399

Tripolare con monitoraggio elettronico per fusibili	Three-pole fuse-switches with electronic fuse monitoring	Sectionneur tripolaire avec contrôle électronique pour fusibles
Corrente 160 A	Current 160 A	Courant 160 A
Tensione 690 V	Voltage 690 V	Tension 690 V



SEZIONATORI NZ

NZ fuse-switches | *Sectionneurs NZ*



SEZIONATORE ORIZZONTALE NH1

NH1 horizontal fuse-switch | *Sectionneur horizontal NH1*

Corrente 250 A	Current 250 A	Courant 250 A
Tensione 690 V	Voltage 690 V	Tension 690 V
Temperatura -25°C +55°C	Temperature range -25°C +55°C	Température -25°C +55°C
Manovre 800	Cycles 800	Manoeuvres 800
Categoria AC 21B	Category AC 21B	Catégorie AC 21B
Norme riferimento VDE 660T107 EN 60947-3 IEC 60947-3	Standards VDE 660T107 EN 60947-3 IEC 60947-3	Normes VDE 660T107 EN 60947-3 IEC 60947-3
Codice omologazione EFEN NT - IN	Approval code EFEN NT - IN	Code d'homologation EFEN NT - IN



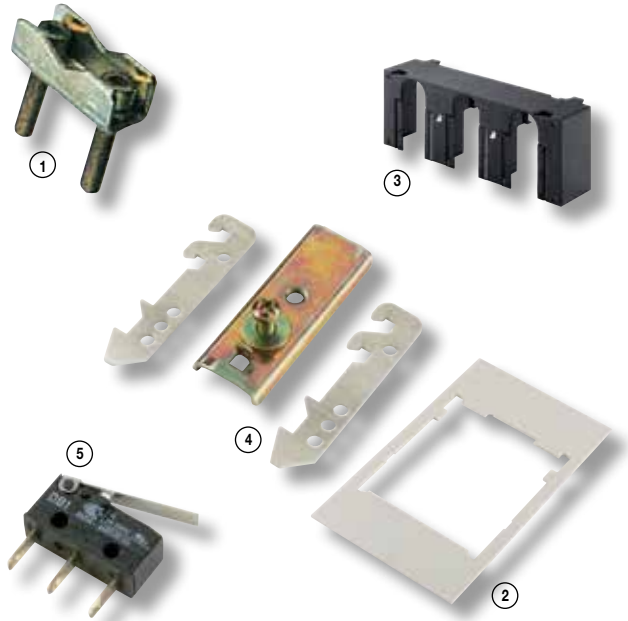
Code Code	Contatti Contacts Contacts	Fissaggio Mounting Fixation
NZ1BH301	U2 - U2	vite/screw/vis
NZ1BH302	U2 - K92	Bus - Bar 60 mm
NZ1BH303	K92 - U2	Bus - Bar 60 mm
NZ1BH304	U2 - K93	Bus - Bar 100 mm
NZ1BH305	K93 - U2	Bus - Bar 100 mm



1 pz
1 pc
1 pce



pronta
in stock
en stock



ACCESSORI PER SEZIONATORE NH1

Accessories for NH1 fuse-switch | *Accessoires pour sectionneurs NH1*

Code Code	Fig. Fig.	Descrizione Description Description
NZ1AH001	(1)	brida piatta/pressure plate/bride plate
NZ1AH003	(2)	cornice/frame/cadre
NZ1AH004	(3)	copricontatti/contact shrouds/capot de protection des contacts
NZ1AH005	(4)	adattatore guida DIN/quick fixing device for DIN RAIL/adaptateur rail DIN
NZ2AH005	(5)	micro-switch di posizione sportello micro-switch for cover position/micro-switch

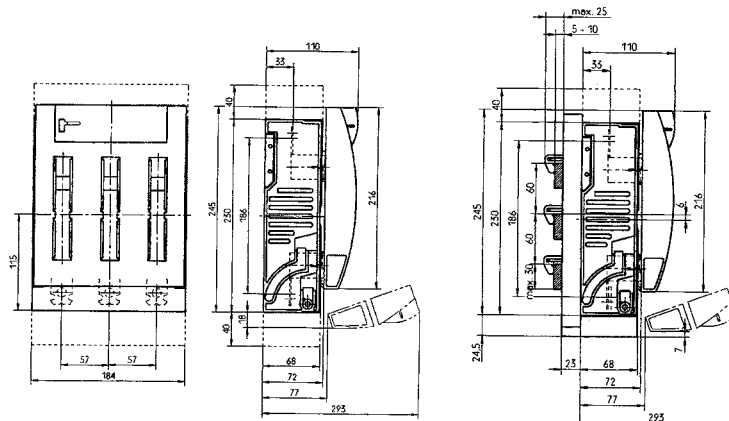


1 pz
1 pc
1 pce



pronta
in stock
en stock

Dimensioni | Dimensions | Dimensions



SEZIONATORI NZ

NZ fuse-switches | Sectionneurs NZ



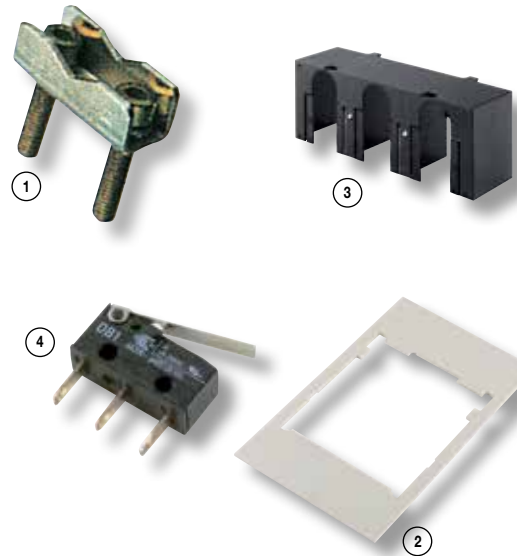
SEZIONATORE ORIZZONTALE NH2 E NH3

NH2 and NH3 horizontal fuse-switch | Sectionneur horizontal NH2 et NH3

Corrente 400 A/630 A	Current 400 A/630 A	Courant 400 A/630 A
Tensione 690 V	Voltage 690 V	Tension 690 V
Temperatura -25°C +55°C	Temperature range -25°C +55°C	Température -25°C +55°C
Manovre 800	Cycles 800	Manoeuvres 800
Categoria AC 21B	Category AC 21B	Catégorie AC 21B
Norme riferimento VDE 660T107 EN 60947-3 IEC 60947-3	Standards VDE 660T107 EN 60947-3 IEC 60947-3	Normes VDE 660T107 EN 60947-3 IEC 60947-3
Codice omologazione EFEN NT - IN	Approval code EFEN NT - IN	Code d'homologation EFEN NT - IN



Codice Code Code	Contatti Contacts Contacts	Fissaggio Mounting Fixaton
NH2		
NZ2BH301	U2 - U2	vite/screw/vis
NZ2BH302	U2 - K92	Bus - Bar 60 mm
NZ2BH303	K92 - U2	Bus - Bar 60 mm
NZ2BH304	U2 - K93	Bus - Bar 100 mm
NZ2BH305	K93 - U2	Bus - Bar 100 mm
NH3		
NZ3BH301	U2 - U2	vite/screw/vis
NZ3BH302	U2 - K92	Bus - Bar 60 mm
NZ3BH303	K92 - U2	Bus - Bar 60 mm
NZ3BH304	U2 - K93	Bus - Bar 100 mm
NZ3BH305	K93 - U2	Bus - Bar 100 mm



ACCESSORI PER SEZIONATORE NH2 E NH3

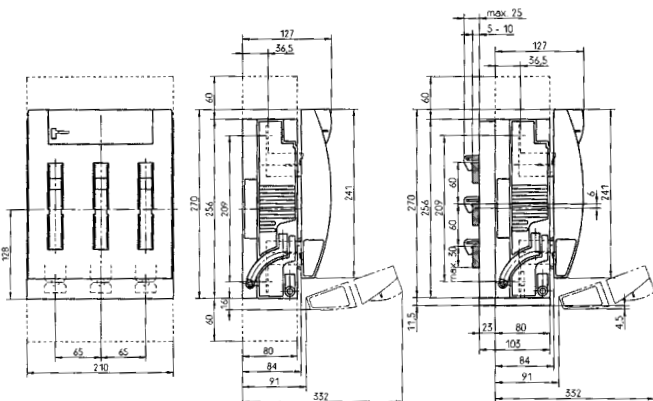
Accessories for NH2 and NH3 fuse-switch | Accessoires pour sectionneur NH2 et NH3

Codice Code Code	Fig. Fig. Fig.	Descrizione Description Description
NH2		
NZ2AH001	(1)	brida piatta/pressure plate/bride plate 6-25 mm ² (set 6pz)
NZ2AH003	(2)	cornice/frame/cadre
NZ2AH004	(3)	copricondotti/contact shrouds/capot de protection des contacts
NZ2AH005	(4)	micro-switch di posizione sportello micro-switch for cover position/micro-switch
NZ3AH006		brida piatta con contatto a prisma 35-240 mm ² (set 6pz) Pressure plate with contact prism/bride plate avec contact à prisme
NH3		
NZ2AH001	(1)	brida piatta/pressure plate/bride plate 6-25 mm ² set 6pz
NZ2AH003	(2)	cornice/frame/cadre
NZ3AH004	(3)	copricondotti/contact shrouds/capot de protection des contacts
NZ2AH005	(4)	micro-switch di posizione sportello micro-switch for cover position/micro-switch
NZ3AH006		brida piatta con contatto a prisma 35-240 mm ² (set 6pz) Pressure plate with contact prism/bride plate avec contact à prisme

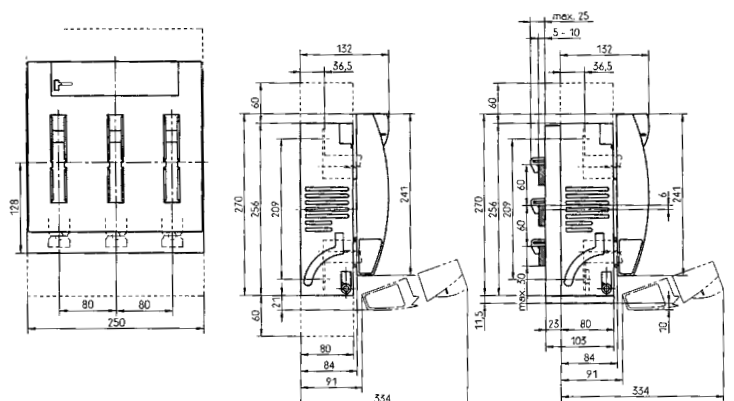


Dimensioni | Dimensions | Dimensions

NH2



NH3



SEZIONATORI NZ

NZ fuse-switches | *Sectionneurs NZ*



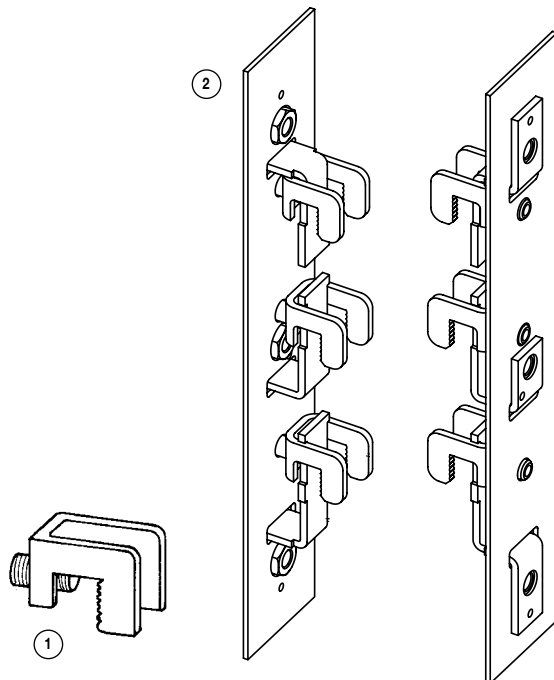
SEZIONATORI VERTICALI NH00

NH00 vertical fuse-switches | *Sectionneurs verticaux NH00*

Corrente	Current	Courant
160 A	160 A	160 A
Tensione	Voltage	Tension
690 V	690 V	690 V
Temperatura	Temperature range	Température
-25°C +55°C	-25°C +55°C	-25°C +55°C
Manovre	Cycles	Manoeuvres
1600	1600	1600
Categoria	Category	Catégorie
AC 21B	AC 21B	AC 21B
Norme riferimento	Standards	Normes
VDE 660T107 EN/IEC 60947-3	VDE 660T107 EN/IEC 60947-3	VDE 660T107 EN/IEC 60947-3
Codice omologazione	Approval code	Code d'homologation
EFEN NSL - IN	EFEN NSL - IN	EFEN NSL - IN



Codice	Contatti	Fissaggio
Code	Contacts	Mounting
Code	Contacts	Fixation
Unipolari Single-pole Unipolaires		
NZ00BV101	M8/M8	vite/screw/vis
NZ00BV104	M8	Bus - Bar
Tripolari Three-pole Tripolaires		
*NZ00BV301	M8	Bus - Bar 100 mm
•NZ00BV304	M8	Bus - Bar 60 mm



ACCESSORI PER SEZIONATORI VERTICALI NH00

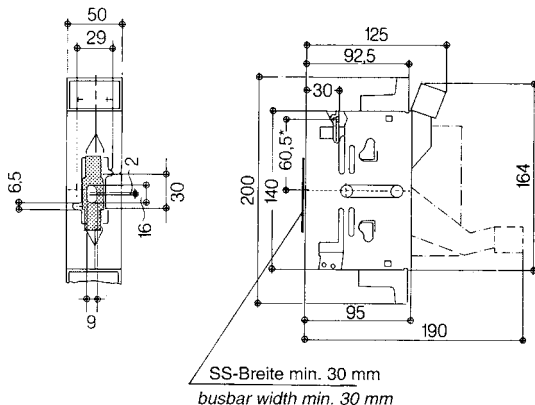
Acces. for NH00 vertical fuse-switches | *Acces. pour Sectionneurs verticaux NH00*

Codice	Fig.	Descrizione
Code	Fig.	Description
NZ00AV054	(1)	contatto ad uncino 3 pz/hook contact/contact à crochet 3 pcs
NZ00AV010	(2)	adattatore per Bus - Bar 60/adapter for Bus-Bar 60 mm/ adaptateur pour Bus-Bar 60 mm
NZ00AV011		adattatore per Bus - Bar 185 adapter for Bus-Bar 185 mm/adaptateur pour Bus-Bar 185 mm
NZ00AV012		adattatore per Bus - Bar 185 vers. bipolari/adapter for Bus-Bar 185 mm double-pole vers./adapt. pour Bus-Bar 185 mm vers. bipolaires
NZ00AV001		placca di unione maniglie per operazioni parallele/connecting plate for parallel operation/plaque d'union de poignées pour opérations parallèles

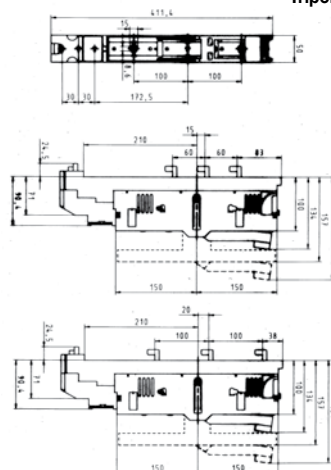


Dimensioni | Dimensions | Dimensions

Unipolari/Single-pole/Unipolaires

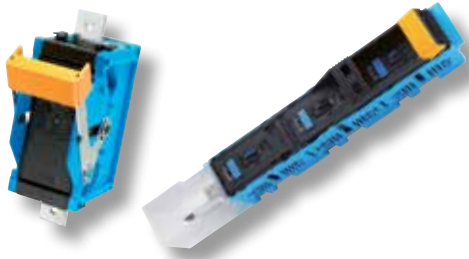


Tripolari/Three-pole/Tripolaires



SEZIONATORI NZ

NZ fuse-switches | *Sectionneurs NZ*



SEZIONATORI VERTICALI NH1

NH1 vertical fuse-switches | *Sectionneurs verticaux NH1*

Corrente 250 A	Current 250 A	Courant 250 A
Tensione 690 V	Voltage 690 V	Tension 690 V
Temperatura -25°C +55°C	Temperature range -25°C +55°C	Température -25°C +55°C
Manovre 1600	Cycles 1600	Manoeuvres 1600
Categoria AC 21B	Category AC 21B	Catégorie AC 21B
Norme riferimento VDE 660T107 EN/IEC 60947-3	Standards VDE 660T107 EN/IEC 60947-3	Normes VDE 660T107 EN/IEC 60947-3
Codice omologazione EFEN NSL	Approval code EFEN NSL	Code d'homologation EFEN NSL



SEZIONATORI VERTICALI NH2

NH2 vertical fuse-switches | *Sectionneurs verticaux NH2*

Corrente 400 A	Current 400 A	Courant 400 A
Tensione 690 V	Voltage 690 V	Tension 690 V
Temperatura -25°C +55°C	Temperature range -25°C +55°C	Température -25°C +55°C
Manovre 1000	Cycles 1000	Manoeuvres 1000
Categoria AC 21B	Category AC 21B	Catégorie AC 21B
Norme riferimento VDE 660T107 EN/IEC 60947-3	Standards VDE 660T107 EN/IEC 60947-3	Normes VDE 660T107 EN/IEC 60947-3
Codice omologazione EFEN NSL	Approval code EFEN NSL	Code d'homologation EFEN NSL



Codice Code Code	Contatti Contacts Contacts	Fissaggio Mounting Fixation
Unipolari Single-pole Unipolaires		
NZ1BV101	M10 - M10	vite/screw/vis
Tripolari Three-pole Tripolaires		
*NZ1BV301	M12	Bus - Bar 185 mm
•NZ1BV304	M12	Bus - Bar 185 mm

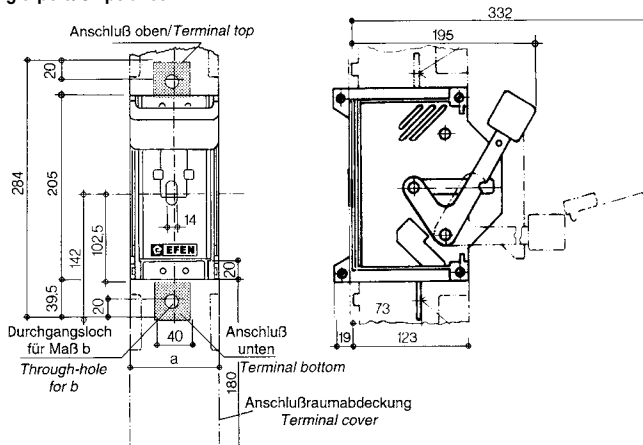
1 pz 1 pc 1 pce	pronta in stock en stock	* 1 maniglia tripolare 1 three-pole handle 1 poignée tripolaire	• 3 maniglie separate 3 separate handles 3 poignées séparées
-----------------------	-----------------------------	---	--

Codice Code Code	Contatti Contacts Contacts	Fissaggio Mounting Fixation
Unipolari Single-pole Unipolaires		
NZ2BV101	M10 - M10	vite/screw/vis
Tripolari Three-pole Tripolaires		
*NZ2BV301	M12	Bus - Bar 185 mm
•NZ2BV304	M12	Bus - Bar 185 mm

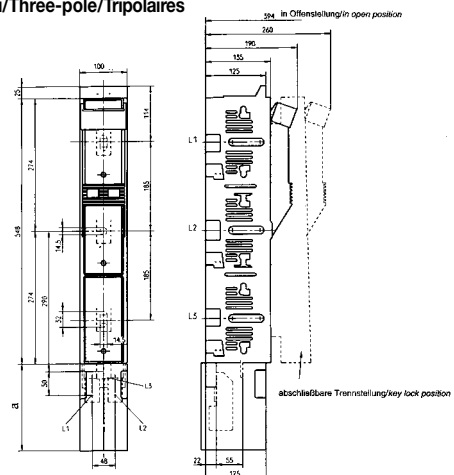
1 pz 1 pc 1 pce	pronta in stock en stock	* 1 maniglia tripolare 1 three-pole handle 1 poignée tripolaire	• 3 maniglie separate 3 separate handles 3 poignées séparées
-----------------------	-----------------------------	---	--

Dimensioni | Dimensions | Dimensions

Unipolari/Single-pole/Unipolaires



Tripolari/Three-pole/Tripolaires



SEZIONATORI NZ

NZ fuse-switches | *Sectionneurs NZ*



SEZIONATORI VERTICALI NH3

NH3 vertical fuse-switches | *Sectionneurs verticaux NH3*

Corrente 630 A	Current 630 A	Courant 630 A
Tensione 690 V	Voltage 690 V	Tension 690 V
Temperatura -25°C +55°C	Temperature range -25°C +55°C	Température -25°C +55°C
Manovre 1000	Cycles 1000	Manoeuvres 1000
Categoria AC 21B	Category AC 21B	Catégorie AC 21B
Norme riferimento VDE 660T107 EN/IEC 60947-3	Standards VDE 660T107 EN/IEC 60947-3	Normes VDE 660T107 EN/IEC 60947-3
Codice omologazione EFEN NSL	Approval code EFEN NSL	Code d'homologation EFEN NSL

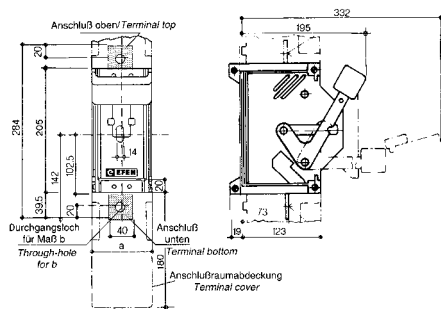


Codice Code Code	Contatti Contacts Contacts	Fissaggio Mounting Fixation
------------------------	----------------------------------	-----------------------------------

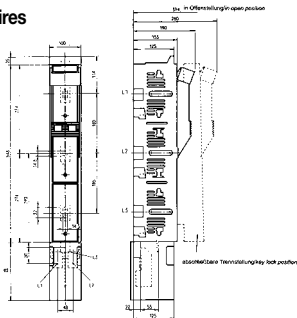
Unipolari Single-pole Unipolaires		
NZ3 BV 101	M12 - M12	vite/screw/vis
Tripolari Three-pole Tripolaires		
*NZ3 BV 301	M12	Bus - Bar 185 mm
•NZ3 BV 304	M12	Bus - Bar 185 mm

Dimensioni | Dimensions | Dimensions

Unipolari/Single-pole/Unipolaires



Tripolari/Three-pole/Tripolaires



1 pz
1 pc
1 pce



pronta
in stock
en stock



* 1 maniglia tripolare
1 three-pole handle
1 poignée tripolaire



* 3 maniglie separate
3 separate handles
3 poignées séparées



SEZIONATORE VERTICALE NH4a

NH4a vertical fuse switches | *Sectionneurs verticaux NH4a*

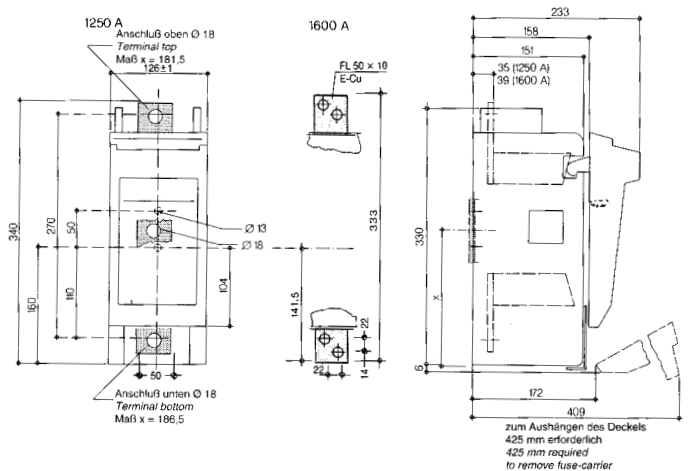
Corrente 1250 A	Current 1250 A	Courant 1250 A
Tensione 690 V	Voltage 690 V	Tension 690 V
Temperatura -25°C +55°C	Temperature range -25°C +55°C	Température -25°C +55°C
Manovre 1000	Cycles 1000	Manoeuvres 1000
Categoria AC 21B	Category AC 21B	Catégorie AC 21B
Norme riferimento VDE 660T107 EN/IEC 60947-3	Standards VDE 660T107 EN/IEC 60947-3	Normes VDE 660T107 EN/IEC 60947-3
Codice omologazione EFEN NSL	Approval code EFEN NSL	Code d'homologation EFEN NSL



Codice Code Code	Contatti Contacts Contacts	Fissaggio Mounting Fixation
------------------------	----------------------------------	-----------------------------------

Unipolari Single-pole Unipolaires		
NZ4 BV 101	M16	vite/screw/vis

Dimensioni | Dimensions | Dimensions



1 pz
1 pc
1 pce



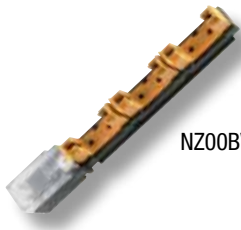
pronta
in stock
en stock



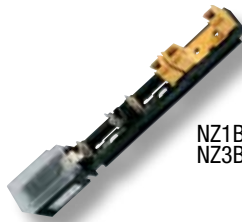
a richiesta versione tripolare
three-pole version is available upon request
sur demande, version tripolaire

SEZIONATORI SPECIALI

Special fuses-switches | Sectionneurs spéciaux



NZ00BV352



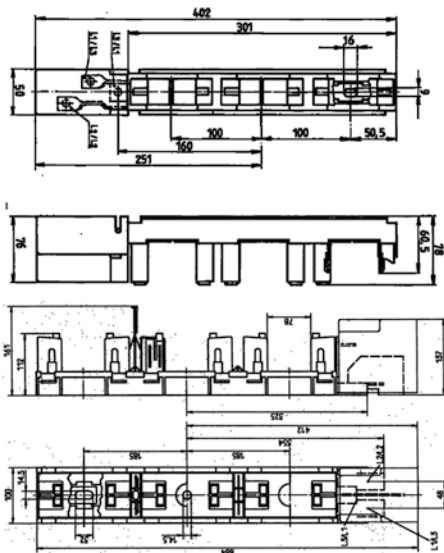
NZ1BV352
NZ3BV352

TRIPOLARE VERTICALE Three-pole vertical | Tripolaire verticale

NZ00BV352	NZ00BV352	NZ00BV352
Per fusibili NH00 Corrente 160 A Tensione 690 V Fissaggio Bus - Bar 100 Contatti M8	For NH00 Current 160 A Voltage 690 V Mounting Bus - Bar 100 Contacts M8	Pour fusibles NH00 Courant 160 A Tension 690 V Fixation Bus - Bar 100 Contacts M8
NZ1BV352	NZ1BV352	NZ1BV352
Per fusibili NH1 e NH2 Corrente 400 A Tensione 690 V Fissaggio Bus - Bar 185 Contatti M12	For NH1 and NH2 fuses Current 400 A Voltage 690 V Mounting Bus - Bar 185 Contacts M12	Pour fusibles NH1 et NH2 Courant 400 A Tension 690 V Fixation Bus - Bar 185 Contacts M12
NZ3BV352	NZ3BV352	NZ3BV352
per fusibili NH3 Corrente 630 A Tensione 690 V Fissaggio Bus - Bar 185 Contatti M12	for NH3 fuses Current 630 A Voltage 690 V Mounting Bus - Bar 185 Contacts M12	pour fusibles NH3 Courant 630 A Tension 690 V Fixation Bus - Bar 185 Contacts M12



Dimensioni | Dimensions | Dimensions



completo di coperchi e protezioni/
a richiesta contatti ad uncino NZ00AV054
covers and protections included hook/
contacts type NZ00AV054 are available upon request
complété de couvercles et protections/
sur demande, contacts à crochet NZ00AV054

NZ00BV352



2 pz
2 pc
2 pce

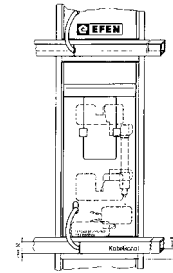
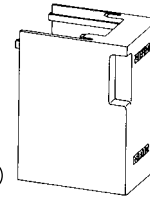
NZ1BV352 - NZ3BV352



1 pz
1 pc
1 pce



pronta
in stock
en stock



ACCESSORI PER SEZIONATORI VERTICALI NH1-2-3

Acces. for NH1-2-3 vertical fuse-switches | Acces. pour sectionneurs verticaux NH1-2-3

Codice Code Code	Fig. Fig. Fig.	Descrizione Description Description
NZ1 AV 003	(1)	coperchio per terminali in parallelo parallel terminals cover/couvercle pour terminaux en parallèles
NZ1 AV 001		maniglia di connes. per operazioni parallele/ connecting handle for parallel operations/poignée de connexion pour des opérations parallèles
NZ1 AV 002		terminali per connessioni parallele/ terminals for parallel connections/terminaux pour connexions parallèles
NZ2 AH 005		micro-switch/micro-switch/micro-switch
NZ1 AV 007		coprimerminali 140mm/terminal covers 140mm/capot pour terminaux
NZ1 AV 0100		perno per connessione di 2 maniglie/twinning set for parallel operation/pivot pour la connexion de 2 poignées
Accessori a richiesta già montati Assembled accessories upon request Sur demande, accessoires déjà montés		
NZ1 AV 014	(2)	sportello con monitoraggio (striker+micro-switch) monitoring window/fenêtre de contrôle



1 pz
1 pc
1 pce



pronta
in stock
en stock

SEZIONATORI NZ

NZ fuse-switches | Sectionneurs NZ



SEZIONATORI VERTICALI PER TELECOMUNICAZIONI NH 80V

NH vertical fuses-switches for telecom 80V | Sectionneurs verticaux pour télécommunications NH 80V

Corrente
250 A / 1600 A

Tensione
80 V d.c.

N° poli
1

Temperatura
-40°C +55°C

Codice omologazione
EFEN TPS

Current
250 A / 1600 A

Voltage
80 V d.c.

N° poles
1

Temperature
-40°C +55°C

Approval code
EFEN TPS

Courant
250 A / 1600 A

Tension
80 V d.c.

N° pôles
1

Température
-40°C +55°C

Code d'homologation
EFEN TPS



pag. 71



Codice Code Code	Corrente Current Courant	Contatti Contacts Contacts	Fissaggio Mounting Fixation
NZ00BV101/250	250 A	M8+M8	vite/screw à vis
NZ00BV104/250	250 A	M8	bus-bar
NZ00BV101/600	600 A	M12+M12	vite/screw à vis
NZ2BV101/1200	1200 A	M16	vite/screw à vis
NZ2BV101/1600	1600 A	M12+M12	vite/screw à vis

ACCESSORI

Accessories | Accessoires

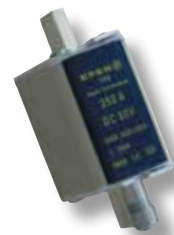
Codice Code Code	Adatto per Suitable for Indiqué pour	Descrizione Description Description
NZ00AV001	250 A -600 A	set di connessione per operazioni parallele twinning set for parallel operation/jeu de connexion pour opérations parallèles
NZ00AV002/250	250 A	contatto ad uncino/hook contact/contact à crochet
NZ000AH002	250 A-600 A	micro-interruttore/micro-switch/micro-interrupteur



1 pz
1 pc
1 pce



30 giorni
30 days
30 jours



FUSIBILI PER TELECOMUNICAZIONI NH 80V

NH fuse-link for telecom 80V | Fusibles pour télécommunications NH 80V

Tensione
80 V d.c.

Potere di interruzione
25 kA d.c.

Voltage
80 V d.c.

Breaking capacity
25 kA d.c.

Tension
80 V d.c.

Pouvoir de coupure
25 kA d.c.



pag. 71



Corrente nominale d.c. Rated current d.c. Courant nominal d.c.	Codice Code Code	Pot. dissipata Power loss Puis. dissipée
60 A	NH00G060/80	4,5 W
80 A	NH00G080/80	5,0 W
100 A	NH00G100/80	6,5 W
• 150 A	NH00G150/80	10 W
• 200 A	NH00G200/80	12 W
• 250 A	NH00G250/80	13 W
300 A	NH00G300/80	16 W
400 A	NH00G400/80	19,5 W
500 A	NH00G500/80	26 W
600 A	NH00G600/80	29 W
800 A	NH2G800/80	43 W
1000 A	NH2G1000/80	57 W
1200 A	NH2G1200/80	64 W
1600 A	NH2G1600/80	96 W



3 pz
3 pcs
3 pces



30 giorni
30 days
30 jours

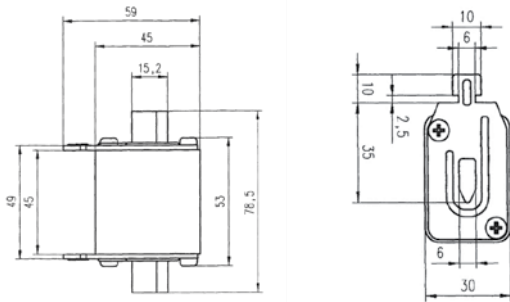


* a richiesta fornibili con striker
available with striker upon request
disponible avec percuteur sur demande

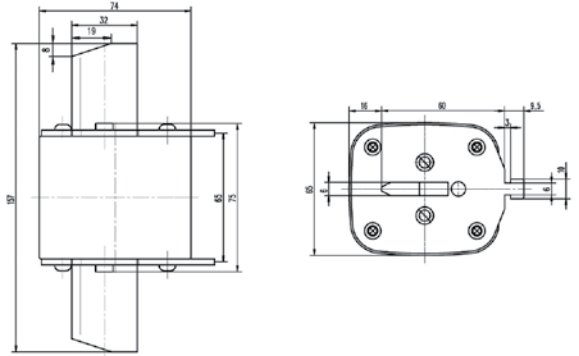
SEZIONATORI NZ

NZ fuse-switches | Sectionneurs NZ

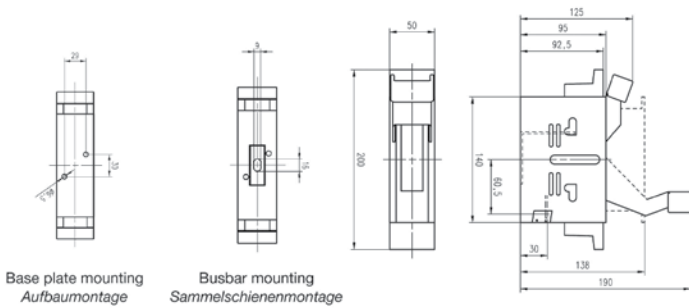
NH00GXXX/80



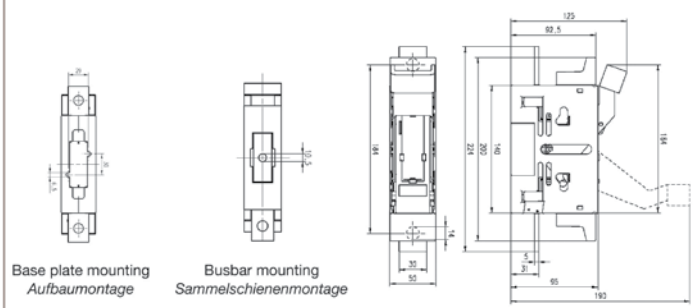
NH2GXXX/80



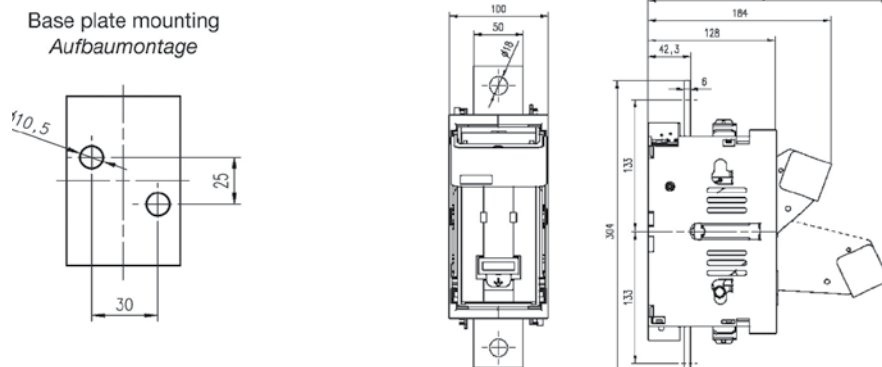
NZ00BV10X/250



NZ00BV101/600



NZ2BV101/1200



NZ2BV101/1600

